



MAY, 2018

NEWSLETTER

Fear Free Veterinary Care For Your Furry Friend. That's Franklin Farm.

HOURS:

Monday - Friday: 7:30am-6:30pm

Saturday: 8:00am-1:00pm

Sunday: Closed



FROM THE DOCTOR'S DESK

Summertime Safety Tips For Combatting Ticks!

It is that time of year when we are all excited to get outside and explore beautiful Northern Virginia with our family, friends and of course, our pets. The dark side to beautiful weather is the emergence of numerous parasites outside, including ticks.

These creatures are not only disturbing to see on ourselves or our pets, they are also dangerous. Many of the ticks we encounter in this area carry infectious diseases like Ehrlichiosis or Lyme disease.

Every species of tick comes in small, medium and large sizes. The smallest size, called larvae, are nearly microscopic. The middle stage, or nymph stage, is about the size of a pin head before it takes a blood meal. The large adult tick can vary in size depending on whether or not a blood meal has been ingested.

The blacklegged or deer tick (*Ixodes scapularis*) is one of the most commonly encountered ticks in our area. Ticks become infected with bacteria when larvae (or nymphs) take a blood meal from deer or mice. Engorged larvae molt over winter and emerge in the spring as tiny nymph deer ticks.

Statistically, most cases of Lyme disease are transmitted from May through July, when nymph stage ticks are active. Adult-stage deer ticks become active in the fall and remain active throughout the winter whenever the ground is not frozen.



DEER TICK

Blood-engorged females survive the winter in leaf litter and begin laying their 1,500 or more eggs near the end of spring.

These eggs hatch in July, and the life-cycle starts again when larvae become active in August. Typically, about 50% of adult blacklegged ticks are infected with Lyme bacteria.



BROWN DOG TICK

Another common tick is the brown dog tick (*Rhipicephalus sanguineus*), the carrier of canine Ehrlichiosis, Rocky Mountain Spotted Fever and Babesiosis.

These ticks are found throughout the United States. They occur predominately in and around human and animal homes and can spend their entire life cycle indoors. Under optimal conditions, brown dog ticks complete their life cycle in as few as three months. All life stages of this tick can transmit Rocky Mountain Spotted Fever (*Rickettsia rickettsia*) to dogs. Both the nymph and adult stages can transmit the agents of canine ehrlichiosis (*Ehrlichia canis*) and canine babesiosis (*Babesia canis vogeli* and *Babesia gibsoni*-like) to dogs.

It is very important to take steps to protect your pets from ticks and the diseases they carry. The first line of defense is using a flea and tick preventative at the recommended dosing

frequency. We recommend using oral Nexgard chews or applying topical Frontline Gold for dogs and topical Frontline Gold or Revolution monthly for cats. The Seresto flea and tick collar is another great option for tick and flea control in both dogs and cats.

The next important step is to check your pet closely for ticks after outdoor excursions and remove any ticks carefully without exposing yourself to the tick mouth parts.

A great resource for the correct way to remove a tick can be found at http://www.tickencounter.org/prevention/tick_removal. This website also allows you to send pictures of any ticks you find on yourself or your pets for identification.

Finally, while there are no vaccinations available to prevent Ehrlichia infection, Lyme vaccination can provide a third level of protection for your dog. We recommend vaccinating all dogs in this area for Lyme disease due to the high numbers of positive dogs we find during annual heart worm and tick-carried disease screening tests.

Please contact us at the clinic or via email at FFVCinfo@gmail.com with any questions or comments.



Written By:
Dr. Kathleen Phillips



CAT FACTS

Did you know...

- Cats can drink seawater
- Some cats have thumbs.
- The furry tufts on the inside of cats' ears are called "ear furnishings".
- Nikola Tesla was inspired to investigate electricity after his cat, Macak, gave him a static shock.
- Kittens start to dream when they're about a week old.
- By neutering a cat, you add about two to three years to its life.

Buzzfeed



★ Sheldon ★

PET OF THE MONTH

Sheldon is a 16 year-old domestic short hair cat.

He loves adventures with his family and walks with his harness outside. He is laid back and enjoys resting on his pet parent's head.

He was diagnosed with kidney disease. Cat's kidneys do many important things. They help manage blood pressure, make hormones, stimulate bone marrow to make more red blood cells and remove waste from the blood.

Sheldon loves his new renal diet which is made specifically to support his kidneys. We enjoy seeing Sheldon as he purrs, head butts, and "talks" (as seen above).

DOG FACTS

Did you know...

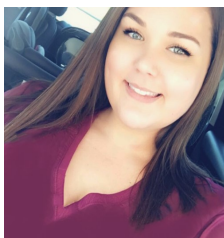
- Dogs can learn more than 1000 words.
- Puppies grow to half their body weight in the first four to five months.
- Perky-eared dogs hear sounds better than flop eared dogs.
- Dogs can see best at dusk.
- Dogs only have sweat glands in their paws
- Dogs whiskers help them to "see" in the dark



Buzzfeed

EMPLOYEE SPOTLIGHT

Caroline Webster!



CAROLINE

About Caroline:

Caroline's interests include her two fur babies "Bron" and "Snuffy." She loves her job and has a real passion for animals.

In her spare time, Caroline enjoys going on nature walks and practicing photography.

Caroline hopes to be a licensed Vet Tech one day! We are very excited to have her on our team and can't wait for all of our wonderful clients to meet her!

IN THE MONTH OF MAY:

- ⇒ Responsible Animal Guardian Month.
- ⇒ Pet Cancer Awareness Month.
- ⇒ National Service Animal Eye Exam month.
- ⇒ Lyme disease Prevention Month.
- ⇒ Chip Your Pets Month.



RUFFeral Program

At Franklin Farm, we believe "RUFFerals" are the greatest form of flattery. That's why, when you refer a furry friend to Franklin Farm, everybody gets a treat!

YOUR PET

Refer a friend and Your pet will receive a \$25.00 credit at your next appointment after your referral has mentioned you!

YOUR REFERRAL'S PET

Your referral's pet will also receive a FREE goody-bag of treats at their first appointment with Franklin Farm!